



Dear Clients,

Happy New Year! Welcome to 2022. I hope you and your families had a happy and safe holiday season. OMNI & TSACG is pleased to provide your organization with its Report Card detailing your 2021 fourth quarter plan administration activity. As you will see, this report card provides you various information concerning your plan, including employee participation and plan assets. If you haven't done so, please send your remittance specialist your updated payroll schedule to ensure timely and efficient remittance administration. OMNI & TSACG continues to make great strides on our integration and is looking forward to providing your organization with an enhanced and more streamlined experience. If you have any questions about the above or anything 403(b) or 457(b) related, please do not hesitate to contact your Client Relations Manager.

Sincerely,

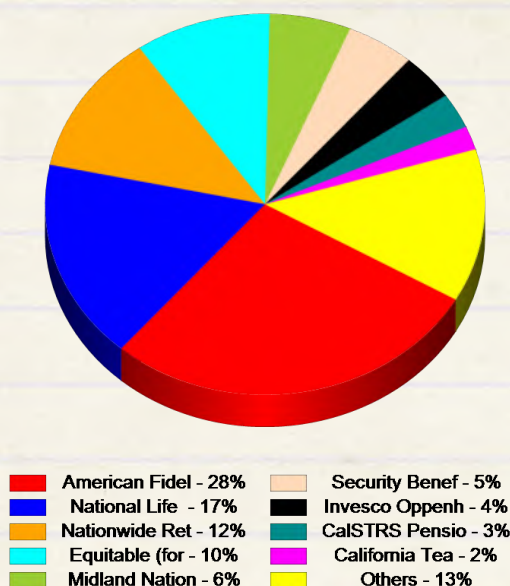
Sarah Breiner

Sarah Breiner, Managing Director & General Counsel

Total Contributing Participants

442

Participation by Service Provider



* Contributions Remitted to Service Providers This Quarter

American Fidelity	\$142,620.00
National Life Group	\$91,719.00
Nationwide Retirement	\$61,676.00
Equitable (formerly	\$42,269.00
Midland National	\$50,205.00

Total Plan Assets

\$41,278,806.09

* Total Plan Assets by Reporting Service Provider

American Fidelity	\$7,361,128.52
National Life Group	\$3,148,230.77
Nationwide Retirement	Not Reporting
Equitable (formerly	\$1,881,183.21
Midland National	\$5,301,912.97

* Plan asset and remittance information is provided for the five most utilized service providers. Asset information originates from industry standard SPARK file transmission. The frequency of SPARK data transmission varies and some providers do not utilize SPARK data. Accordingly, this data is intended for general guidance.

Salary Reduction Agreements Processed

This Quarter	Last 12 Months
35	175

New Accounts Opened

This Quarter	Last 12 Months
13	47

Transactions Processed - Last 12 Months

Distributions	14
Loans	17
Hardships	5
Exchanges/Transfers	13
QDRO's	0
TOTAL	140

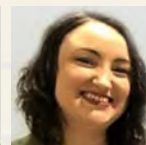
Payroll Schedules on Record

Representation of future payroll dates on file with OMNI.



Dedicated Specialists

Erica Wheat
Client Relations
Manager
Ext. 296



Jennifer Gunderson
Remittance
Specialist
Ext. 162